

November - December 2022



Alsea Valley Voice



Eddy Provost, ACE President and Ashlee Chavez, Director of Corvallis-Benton County Public Library (see article on Page 11 and more pictures on pages 14, 15, 22 & 24)

Alsea Valley Voice

November - December 2022

Volume 24, No. 6

Editor in Chief

Kathy Adair

Layout Specialist

TBA

Production Crew

Naomi Shadwick, Debra Coddington, Kathy Plaza, Phillip Plaza,
Shelley Smith, Michael Hill, Peggy Duncan, Mary Ann Carr,
Cheryl Ross

Advertising Director

Pauline Tanaka

Printed by

Franklin Printing, Corvallis, Oregon

The Alsea Valley Voice is a publication of the Alsea Community Effort

President Eddy Provost

Treasurer Naomi Shadwick

Secretary Meredith Howell

Alsea Valley Voice (AVV) (USPS Permit No. 135) is published bi-monthly, and free for residence of Alsea Oregon and the surrounding communities by Alsea Community Effort, 19192 Alsea Highway, Alsea, Oregon 97324 - a nonprofit 501(c) Organization serving the social and economic needs of our rural community. Preferred periodical postage paid at Alsea, Oregon 97324. All rights reserved. Reproduction in whole or in art without written permission is prohibited.

Postmaster: Send address changes to ACE /AVV 19192 Alsea Highway, Alsea, Oregon 97324

How to contact the AVV

Email

Alseavalleyvoice1@gmail.com

Subscription services

Nonresident subscriptions \$15.00 (U.S.) per year; \$25 per year (Foreign).

Prepayment required. Allow 4-8 weeks for first issue.

Address Changes

Call us at 541 487 8696 or email info@alseacommunityeffort.org

Display advertising inquires

Pauline Tanaka: 541 487 4741 or pauline.tanaka@gmail.com

Inside This Issue:

- 3 Letter from the Editor
- 4 Musings from the ACE President
- 5 Alsea Hope Grange Country Christmas Bazaar
- 6 Bring Back the Blue
- 7 Alsea Valley Gleaners – A Successful Year
- 8 Winter in the Garden
- 9 Community Fun in Alsea
- 10 Progress at the Alsea Emergency Operations Center
- 11 Library Legacy Fund
- 12 To-Go Eating Becomes Less Wasteful
- 13 Alsea Community Consortium
- 14 Library Legacy Fund Pictures
- 16 Commissioner's Corner
- 16 Alsea Bond Project
- 18 Back in Blue Additional Pictures
- 20 Survey for Benton County Natural Hazards
- 23 Library Lines
- 25 Alsea School Looks to Future
- 26 In Memory of Eric Lundgren
- 27 The Girl I Love - Poem

Letter From The Editor

By Kathy Adair

Can you believe it's snowed already? Wow, snow in May and snow in November. I'm a little concerned how this winter is going to play out, since this is the third La Niña in a row. Yes, as a nursery owner, I'm watching the forecasts like a hawk! I must say, I love our [Alsea: HWY 34 Road Conditions and Lobster Valley](#) Facebook page and how everyone does such an amazing job of posting to help keep everyone safe and up-to-date. Keep up the good work, everyone!

Another thing I'm proud of is our community. We have so many good things going on here and it's exciting to see people working hard to make it even better. Many of those things are written about within the pages of this paper. As always, I want to thank each and every one of our contributors and advertisers who make this paper so special. It's what makes this paper something we look forward to reading.

That being said, if you would like to submit an article, please let me know. The next deadline for article submission will be **January 15th, 2023**. This will be for the January/February issue. If you are an organization or business, think about what is coming up that you would like the community to know about and let's get something in the AVV.

As always, if you have questions or article submissions, please don't hesitate to message me on Facebook Messenger or email me at our new email – AlseaValleyVoice1@gmail.com. Don't forget the "1" on the email. You can also still get a hold of me on my personal email.



**Kingfishers Perch
Bed & Breakfast**


Relaxing riverside retreat
Online reservations
[Airbnb.com/rooms/16014044](https://www.airbnb.com/rooms/16014044)

Mark and Shannon Shepherd
Seeley Creek Rd. Alsea, Oregon



Jay Widmer's

Alsea Anagama Kiln
wood-fired pottery from the Oregon Coast Range



27495 Alsea Highway
541-487-5712
www.jaywidmer.us
Facebook: Jay Widmers Alsea Anagama Kiln
call or email for a viewing

fermentation crock



**STARKER
FORESTS, INC.** Growing forests,
not just trees.

Wood
Water
Recreation
Wildlife

www.starkerforests.com (541) 929-2477

JD McGEE, Inc.



CIVIL ENGINEERING

Solving Problems for You!

541.929.4226 jdmcgee.com
1215 Main Street in Philomath

Musing From the ACE President

by Eddy Provost

This is truly a season to be thankful. After many hours of meetings, both online and in person, and countless hours sitting in front of our computers parsing out the right words to express the need and reasons we have to ask numerous potential donors for their financial support, the rewards for this labor were celebrated last month.

In mid November, the ACE Board of Directors, along with members and leaders of our local community, representatives of the Benton County administration, and a few of our generous donors got together to celebrate the launching of the Alsea Library Legacy Fund. (See photos of this event elsewhere in this month's issue.) This fund will help future-proof the building that houses our Library and Community Room, and further assist us in improving our disaster resilience infrastructure. And it also helps us continue our commitment to the greater Alsea Valley community at large.

A partial list of generous donors that have contributed to this newly established legacy fund includes such diverse groups as the OSU Folk Club, the Siletz Tribe, the Ford Family Foundation, the CPI Charitable Trust, the Corvallis/Benton County Public Foundation, and the Lincoln County EMS. Along with numerous local community members, our newest donor group is One Hundred People Who Care. Thank you all for your support.

A special group hug and thanks goes out to Ashlee Chavez, Director of the Benton County Library System and her team for all their help in guiding us through this important work.

And finally, thanks to my fellow ACE board members, Meredith Howell, Secretary, Naomi Shadwick, Treasurer, Kathy Adair, AVV Editor, and Kerry Adair, Board Member at Large, without whose constant support and guidance I would be totally lost.

No matter how large or small, each of these donations of time, money and support are testimonies to how valuable it is for individuals to come together for a common cause and to support each other in times of need. Setting aside personal and/or political differences for the common good of All is what community is all about.

Happy Holidays and a prosperous New Year!

“Personal growth lies within the unknown: courage permits you to explore this space.”

Alsea Community Champions - Pledge Form

I (we) will contribute \$_____ towards the Alsea Library Community Center operations, Maintenance Fund, and/or Alsea Valley Voice newsletter. Please make checks payable to Alsea Community Effort, or A.C.E., and mail donations to 19192 Alsea Hwy, Alsea, OR 97234. You can also drop donations off at the library.

Name(s) _____ Phone _____

Address _____

E-Mail _____

- I (we) would like my donation to remain anonymous
- Please contact me(us) to set up automatic deduction payments



Alsea Hope Grange



Country Christmas Bazaar

December 3rd, 2022 ~ 10am – 4pm

Santa Visit from 11am-12:30pm



Christmas and home décor, scarves, ornaments, cutting boards, crochet items, felted soaps, coasters, handspun yarn, jewelry, baked goods, pies (whole and by the slice) and more! As well as items from Chelsea Rose Seafood and Alsea Booster Club

BBQ food from Pat E Macs BBQ

(with the option to pre-order your food. Check out the link on November 30th on our Facebook page)



@AlseaGrange for more information about our event!

Contact Samantha Pedder, 541-740-1596, pedderfam2013@gmail.com

Bring Back the Blue - Homecoming 4-Day Event

Alsea School District nor our town has never seen anything like this before. Our new AD Bart Rothenberger, brought with him his experience in celebrating homecoming that is over the top fun!

Our Homecoming event was September 28 through Oct 1. First, we had a noise parade in the rain on Wednesday. The juniors and seniors decorated a float and threw out candy, of course. The Alsea Booster Club pulled their trailer decorated with lights and walked handing out candy and small toy prizes. It was great fun even in the rain. Everyone did the loop around town and were greeted by all.

Then after the parade was the BIG event – The Blue Bash! Festivities and games on the football field. Thankfully, the rain died down for the most part. The contests were mostly between the four high school classes and some between 7th and 8th grade. Games included the Mattress Pass, Egg Toss, Oiled Pumpkin Toss, Hold the Bucket Up, Tug of War, Giant Soap Slip and Slide and more. It was epic!! The kids had such a great time competing. We even had a few adults try out the slip and slide. At the end of the evening, everyone was wet and cold, but it was worth it!

On Thursday it was the HS Home Volleyball game, followed by the Iron Man HS Boys Volleyball game and then Girls Powder Puff Football game. We didn't know the boys could spike that well or the girls had such evasive moves. It was just so fun to watch. After the games we had our traditional Bonfire. Adults and kids mingling, taking pictures and just chilling.

Our Homecoming football game was on Friday night with Mohawk, we lost 26-20, but it is always fun watching them play. A highlight was half time Court with princesses and princes riding around the track. The King and Queen were chosen. All looking forward to the Homecoming dance on Saturday night.

It was an immense number of activities to cram into a couple days, but so much fun. The kids will never forget this experience.. nor will the adults. Let's hope we can do this every year, and next year even if you do not have a child in the school, it is worth it to come and check it out. You won't be disappointed.

Terry Lunsford -President
Alsea Wolverines Booster Club



Library Lines

by Kathy Koetz

School Storytimes are great! Near the end of last school year I was able to start having classes come to the Library again. This year, so far, I am reading to the 1st, 2nd, 4th and 5th grade classes! Along with me having fun reading to them, the classes that come over get to pick out their own books to take back to school to read.

We have been having so much fun on LEGOS Day! Kids of all ages are building some really interesting projects. See the Alsea Community Library Facebook page for photos. What wonderful imaginations! We are getting our own supply of Legos soon and will be able to schedule a Legos Day each month (I hope)!

The next program on the Library schedule is a Tweens/Teens Hangout on December from 6th 3:30-4:40. There will be crafts, videos games, snacks and FUN!

The New Year will bring us LEGOS Day on January 3rd from 3:30-4:30 also featuring snacks and FUN!

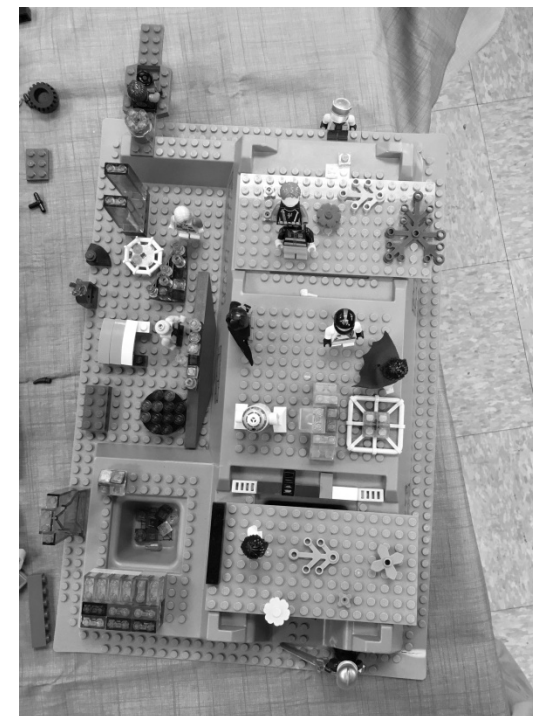
Also coming in January we will have a Maker Day January 17th from 3:30-5 for children of all ages. If you have not been to a Maker Day, it is pretty much as the title suggests...We get to make things and maybe learn something new! In the past we have made flowers that light up, toothbrush robots that write and many more interesting projects. This program is being brought to us by the Mid-Valley STEM-CTE Hub. STEM stands for Science, Technology, Engineering and Math. Sometimes an A is added (STEAM) to include Art.

Dates to remember:

Tuesday December 6 - Teen/Tween Hangout 3:30-4:30

Tuesday January 3rd – 3:30-4:30 Legos!

Tuesday January 17th – Maker Day!



Alsea Valley Gleaners: A Successful Year

by Emily Blake

As many of you already know, Alsea Valley Gleaners (AVG) went through big changes earlier this year. We have an all new Board of Directors, renewed partnerships, many new and returning members, and the food donations and funding to carry us into 2023.

As we wrap up a very fruitful and transformational year, those of us on the new Board would like to express our thanks:

- Thank you to our members for all your enthusiasm and service. Because of you, AVG is alive with friendship each week at distribution and going strong.
- Thank you to Linn Benton Food Share for their renewed confidence and trust in AVG and a beneficial partnership.
- Thank you to our generous grantors in 2022 - the Siletz Tribal Charitable Contribution Fund, which awarded AVG two grants totaling \$4000 for food, and CPI Charitable Trust, which awarded AVG two grants totaling \$992 for expenses.
- Finally, thank you to our Alsea Valley community for all the support you've shown AVG this year.

Alsea Valley Gleaners is a member-powered nonprofit. We receive donations weekly from many nearby grocery stores, farms and other sources. Members get to do their own "shopping", picking out meat, produce, bread, eggs, milk, frozen, snack items, household goods, etc. You get to choose your own food!

We welcome new members and you can save hundreds on your food budget each month. Come down and sign up - our distribution site is 18889 Haines in Alsea and we're open Fridays from 2-7pm.

TIMBER SUPPLY COMPANY, INC.

Locally Owned and Serving the Pacific Northwest Since 1959

We are your one stop logging and construction supply warehouse!!

WE HAVE YOUR FAVORITE BRANDS IN STOCK:

- Prison Blues, Big Bills, Filson and Ben Davis Pants & Shirts
- West Coast, Georgia, Danner and Bogs Boots & Romeos
 - Cable, Chain, Hooks and Shackles
- Culvert Pipe and Road & Landscape Fabric
 - First Aid and Safety Supplies
 - Climbing Gear
- Protech Tool Boxes and Headache Racks

541-929-3151 2354 Main Street Philomath

Retail Hours M-F 7 am – 5 pm Sat. 7 am – 12 pm



Winter in the Garden

Emily Stimac, The Thyme Garden

What do farmers do in the winter? That is a question many of our summer guests ask us as we say goodbye to luncheons, weddings and events each year and close for the season. It's a bunch of time off, right?

That's the rumor, and I even seem to remember hearing my parents, Rolfe and Janet Hagen, saying to folks that we take it easy in fall after working 8 days a week in spring and summer. I'm not 100% sure that's a total truth, though. It seems to me like we have been staying busy!

All joking aside, at The Thyme Garden winter months do bring a new set of work which is fun and different from our summer pace. We clean up the garden and compost the hops fields. We take down the seasonal canopies, dance floor, and lights and put up walls around our porch. Irrigation, buildings and greenhouses are all winterized for cold weather (note to greenhouse owners: don't forget to put up your snow poles!). Also, about 1,000 things need to get fixed each year as nature takes her course.

In addition to closing up the nursery and event space, in November The Thyme Garden hosted our 20th Anniversary Salmon Celebration. It was amazing to realize that it has been two decades since we started the restoration project, an effort that has brought us infinite joy and gratification. Over the last 20 years the event has evolved to become a decadent day of food, friends and fish, with over 150 people attending each year. After 20 years, that equates to around 3,000 people who have joined us to learn about caring for our streams and preserving the salmon populations for future generations (and eating our delicious food!).

This year we were excited to see the faces of some Alsea neighbors among the guests, and also pleased to use many local ingredients. We had local eggs from Sandra Worthean Goad, wild harvested chanterelles from Matt Clark, salad greens from Gathering Together Farm, cauliflower from Riverland Farm, beef from NW Natural, dairy from Lochmead, and our own honey and kale—in addition to loads of fresh herbs from our garden, which we gently retrieved from the cover of the unexpected snow earlier in the week.

The spirit of community was encouraging as we headed to our next event, the launch of the Alsea Library Legacy Fund (see page ?), where we provided light refreshments to the guests as they celebrated the work they had done to gain much needed library funding. We are proud to be a part of this wonderful area, where folks really look out for each other and support each other so selflessly.



CONTINUED ON PAGE 21

COMMUNITY FUN IN ALSEA

On September 20th, Alsea School had it's open house for students and their families to check out their classrooms and teachers. The Alsea Wolverines Booster Club reached out to a few other non-profit entities in Alsea to ask if they would like to participate in a community event introducing themselves to our families.

The Booster Club, Alsea Fire Dept and Alsea Community Effort sponsored a free Ice Cream Social with all the trimmings. Ice cream was donated by Lochmead Dairy, some toppings were donated by Yogurt Extreme. Also present was The Good News Club and Kids Life from the Alsea Fellowship Church, and Cynthia B. with the Foreign Exchange Program. While the Alsea Boosters served Ice cream with all the trimmings, ACE set up their HAM radio demonstration and emergency preparedness information. The Alsea Fire Department brought the fire trucks to showoff to the kids and handed out some fun fire toys.

This was the perfect example of our community coming together where the heart of it is – the school! It was a great community event and worked out so well during the school's Open House. We thank Alsea School for allowing us to host this event. We hope to have it every year with even more participation.

Terry Lunsford – President
AWBC



 **State Farm**™

Severn Thomas, Agent
(541) 929-2534

www.onelocalagent.com

2372 Main Street, Philomath, OR 97370

24 Hour Good Neighbor Service



HUGHES
EXCAVATION

Serving our community for 40 years!

Office: 541-929-3417

100% Employee-owned company

Progress at the Alsea Emergency Operations Center

by Scott Gilbert, KF7GGN

For those readers that are unaware, there is an emergency operations center (EOC) located in the ACE office at the Alsea Library. Others may be aware of the existence of the EOC. The EOC is primarily an amateur (ham) radio station for emergency communications. Some readers may have noticed the antennas that have been arrayed in the lawn area of the library building over the last five years. Thanks to our grant-writer Naomi Shadwick, we have been able to create a fairly sophisticated station set up in the ACE office (see photo) The 60-foot tower just outside the library was erected back in December of '21, and is still awaiting delivery of a permanent antenna that will be mounted on the top. The antenna has been back ordered for quite some time due to supply chain issues. It is due to be delivered in soon. Once the antenna is mounted on the tower, the station will have excellent short and long-distance communication capabilities.

We recently spiffed up the radio “shack” in the EOC with home-made tables made from local wood harvested on Jamie Farrington’s land. Jamie and his nephew Craig Anderson worked very hard for more than a week to make two tables to arrange the radio equipment so that it can be used most efficiently and ergonomically. The radio tables are beautifully made, having a very professional appearance. The radio tables designed to support four stations operator stations. The new radio tables are seen in the photo of the shack.

The EOC also operates under the auspices of the Benton County Sheriff’s Office (BCSO), as a branch of the Benton County Amateur Radio Emergency Services (BCARES). The BCSO is the served agency for BCARES, which also supports Benton County Search and Rescue. While BCARES is headquartered in Corvallis, Alsea is the only rural community in Benton County that touts an ARES organization. Wren also has an emergency ham radio communication facility, but operates independently of BCARES at this time. We would like to see more rural communities in the county take part.

Amateur radio has existed since the earliest days of radio technology, and has been officially recognized since 1914 as a licensed service. Most technological advances in radio over the last 100 years have been due to experimentation by radio amateurs. Ham radio is a licensed radio service of the Federal Communications Commission (FCC). Operators must hold a valid FCC amateur radio license to operate on the air.

As the saying goes, “when all else fails, ham radio will always come through”. This is because ham radio does not rely on any form of infrastructure as do the internet or cell phone networks. If these infrastructures collapse, old-school radio is the only communication option that will be reliable. Ham radio operators have not only contributed to the advancement of radio communications, but also have been very helpful if not essential over the past century in providing communications during natural and human-caused disasters. These communications have aided local, state and federal authorities by relaying important information from disaster zones to authorities where all normal communications networks have been disabled or destroyed. This has been demonstrated most recently during the aftermath of Hurricane Fiona just last month, and Hurricane Maria in 2017 in Puerto Rico. Ham radio operators deployed to Puerto Rico by FEMA and the Salvation Army had set up communication networks on the island and radioed reports of damage, health and welfare messages, and emergency supply requests back to hams on the mainland, who sent the information to federal authorities such as FEMA. Without the help of the boots on the ground ham radio volunteers, remote parts of the island would have been ignored and the much-needed aid significantly delayed after these devastating natural disasters. Hams also run the Hurricane Watch Net based at the National Hurricane Center in Miami, which activates when a hurricane threatens to make landfall in the Gulf of Mexico or on the Atlantic coast. Ham radio operators have been instrumental in helping coordinate disaster relief after tornadoes, earthquakes and wildfires as well.

Continued on Page 19

Launch of the Alsea Community Library Legacy Fund

By Meredith Howell

Friday, November 18th was a big day for Alsea. A group of local community members greeted almost thirty dignitaries and philanthropists to launch the **Alsea Community Library Legacy Fund**. The fund is a partnership between **Alsea Community Effort** or ACE, and the **Corvallis-Benton County Public Library Foundation**. The legacy fund will be used to fund maintenance and repairs at the Alsea Community Library.

Shared ACE President Eddy Provost, *"The Legacy fund is a win-win-win for the community. By working together, the Alsea Community Library, Alsea Community Effort, and the Corvallis-Benton County Public Library Foundation can keep the library and community space full of patrons and programs."*

One of the first maintenance projects that will use the legacy fund is a new roof. ACE hopes to have that installed next summer and has started fundraising for that effort.

The new legacy fund is modelled after the Monroe Library Legacy Fund which was established in 2019 by community members in Monroe and the nonprofit South Benton Community Enhancement. Eventually Library Director Ashlee Chavez hopes to work with community members in Philomath to establish a legacy fund for that rural library. Each of the legacy funds has a set of trustees that oversee the funds which are held and invested by the Public Library Foundation. The new local trustees for the Alsea Legacy Fund are Kathy Plaza, Pauline Tanaka, Maryann Carr, and Sara Cash. This group will also continue the fundraising effort started by the launch event team.

A highlight of the event was the presentation of a check for \$11,800 from the **Power of 100+ People Who Care of Corvallis/Benton County**, a grassroots group that donates funds to nonprofit groups on a quarterly basis. The group selected the Alsea Library Legacy Fund for their fourth quarter donation in 2022. The check was presented to Ashlee Chavez, the Director of the Corvallis/Benton-County Library by members of the Power of 100+.

Members of the Friends of the Corvallis-Benton County Library, Benton County Commissioner Nancy Wyse, Benton County Administrator Joe Kirby, and Alsea Public Schools Interim Superintendent were also in attendance at the event.

All households that receive the Alsea Valley Voice in the mail will be receiving a brochure about the Alsea Library Legacy Fund in early December.

- CONTINUED ON PAGES 14, 15, 22, 24



TO-GO EATING BECOMES LESS WASTEFUL

and you can participate.....

By Janet Hagen

When visiting with friends, discussions usually turn to suggested ways to solve some of the world's problems, right? Since the COVID pandemic, many folks, especially those in bigger towns, got very used to ordering food in, rather than "eating out" in a restaurant. And after ordering in became an ingrained habit, the trend seemingly has continued. The biggest problem with this, in my mind, is the waste produced with each meal. And, often the items are not even recyclable.

I'd been giving this some thought, as well as considering how much more is purchased online than prior to COVID, also producing another increasing amount of waste. When you consider the number of people participating in online buying and to go eating, sometimes you just have to be concerned about all the extra items, being dispersed on our planet (much of it to the landfill). This is of particular concern to me, as I was born and raised in Ohio, a state of gently rolling hills, and learned a few years back that the highest point in that state is Mt. Rumpke. You guessed it, it is their local landfill that possesses the honor of tallest site....in the state! To me, that's worrisome and we need to start addressing it.

So, I was pleasantly impressed when many restaurants switched to cardboard to-go containers which can biodegrade and ditched the styrofoam which does not. But, I got even more excited when another step forward was taken and Benton County along with the Corvallis Sustainability Coalition initiated a new pilot program begun in August of 2022, called Benton County To Go. (For more info: bentoncountytogo.org)

The program is set up as follows: Certain restaurants in Corvallis, Philomath, and (someday) Alsea (?) offer re-usable containers for guest meals. The containers consist of a green, plastic 8 X 8 container or a voucher that a customer can purchase for a one time cost of \$7.00. (NOTE: \$3.00 of your payment returns to the restaurant, the other \$4 covers the production costs). When ordering you just mention that you use this system and you can bring your own container back and re-use it; or trade for a sterilized container; or turn in a voucher (easily stored in your wallet) for storing your meal. And, it seems like a great idea to take along anywhere you go, and use it for your leftovers rather than take a new item each time you order.

The containers meet specifications of the Benton County Health Department and are BPA free and NSF and dishwasher safe. They are purported to even be microwaveable. As an added bonus, the containers are actually produced in Albany, Oregon, so do not have to travel far to get to their new owners! And, this company has found a niche producing them and is very much utilized all around the U.S.

A recent happy customer from The Woodsman was heard to say "I'm very impressed with the durability and strength of the container and I'm excited to participate in this program. I hope more restaurant join in and spread the word about reusable containers".

Continued on Page 17

Alsea Community Consortium Scheduled for Spring 2023

by Sara Cash

As part of my studies as a graduate student in rural social work through the University of Oklahoma, I am delighted to say that my master's project is to do direct volunteer work in the Alsea community. With the kind sponsorship of Alsea Community Effort, I am currently organizing a community wide consortium of Alsea and Lobster Valley community-based organizations, including organizations like the local school and clinic. The purpose of the community meeting is to identify service gaps in our local community, generate stronger support across community organizations, and improve intergroup communication. Collaboration between groups could help to make our community stronger and the futures of our kids brighter. The planned target date is March or April 2023.

It is imperative that no part of our community feels left out of this public conversation. If you know of an official or unofficial group or organization that could bring news and concerns affecting Alsea and Lobster Valley to the table, I am currently creating a list of contacts for the various Alsea organizations and committees. I am amazed at how many hardworking volunteer committees and organizations we have in our wonderful little town. Collaboration between groups could help to make our community stronger and the futures of our kids brighter.

Look for upcoming news as this project develops over the next few months. I will use my University of Oklahoma email for this project, which is Sara.D.Cash-1@ou.edu. You can also contact me at my personal email address, blossomingdeep@outlook.com, or by talk/text at 541-602-7819. My Alsea phone number is 487-8949. Better yet, stop by and see me at my trailer by the clinic. I am excited to be able to serve our community through organizing this process.



18687 Haines Rd
Alsea, Oregon 97324
541 609 6589

airbnb.com/h/country-valley-cottage-alsea

The Cottage at Bummer Creek

Mountain Views
Nature Trails & Creek
Disc Golf



**First Alternative
NATURAL FOODS CO-OP**

**Proudly supporting family farms
and local businesses since 1970**

- WIC and Oregon Trail accepted
- Monthly "Owner Sale Day" discount
- Humanely-raised local meats
- Deli, salad bar, and hot bar
- Fresh, local, organic produce
- Get as little or as much as you need in our extensive bulk section

Instagram Twitter Facebook @firstaltcoop

South Corvallis	North Corvallis	Open daily
1007 SE 3rd St.	2855 NW Grant Ave.	7am - 10pm
(541) 753-3115	(541) 452-3115	www.firstalt.coop

Anyone Can Shop at the Co-op and Everyone Saves!

*The
Franklin Press*

COMMERCIAL PRINTING

office: 541-753-0303 • fax: 541-758-7658
customerservice@franklinpress.org
 5655 SW Philomath Blvd • Corvallis, OR 97333

Your source for copies, printing & binding

**We do Load Ticket Books
and other unique items.**

**Bring this ad in
for a \$5.00 discount
on any order over \$50.00.**

“I am overjoyed at the new level of collaboration between the Library, Alsea Community Effort and the Corvallis-Benton County Library Foundation. We are truly changing the future and longevity of the Alsea Community Library with the creation of the Alsea Library Legacy Fund. The launch party was a wonderful event—full of laughter, ideas, and new connections.” – *Ashlee Chavez, Director of Corvallis-Benton County Public Library*



Ashlee Chavez, Director of Corvallis-Benton County Public Library



Full house of community members and supporters.



From left to right: Ed Provost – ACE President, Ashlee Chavez – Director of Corvallis-Benton County Public Library, Melissa Carter – 100 People Who Care, Lisa Kaufman - Benton County Foundation



Alsea Community Library staff Kathy Koetz shows the library space to guests at the Alsea Library Legacy Fund Launch event. From left to right are Eddy Provost – Alsea Community Effort, Nancy Wyse - Benton County Commissioner, Ashlee Chavez – Corvallis-Benton County Public Library Director, and David Low – President of the C-BC Public Library Foundation. Kathy is standing on the right.



Power of 100+ Who Care of Corvallis-Benton County present a check to the **Alsea Community Library Legacy fund** to support fundraising efforts for a new roof. Each donor contributed \$100 towards the full contribution of \$11,800 as part of their efforts to make a positive quarterly impact in our County.

Additional photos on pages 22 & 24

Commissioners' Corner

Benton County Commissioner Xan Augerot and Lincoln County Commissioner Kaety Jacobson will be hosting a drop-in Commissioners' Corner on Saturday, December 10th from 10-noon, at the Alsea Community Library Meeting Room. The two are interested in hearing from Alsea Valley community members about their dreams and concerns, and looking toward ways each county can help address local issues.

Recognizing that issues such as Highway 34 are beyond county purview, the Commissioners have invited Representative David Gomberg (House District 10) and Senator Dick Anderson (Senate District 5) to join them.

Coffee, tea and snacks will be provided.

Alsea Bond Project

By Sara Cash

Don't let the lack of obvious construction activity at the school mislead you. While construction activities are on a pause for now, the Alsea School Board (ASB) is working to obtain a Guaranteed Maximum Price (GMP) for the Alsea Bond Project (ABP) with CB Construction. Through Linn Benton Lincoln Educational Special Service District (LBL ESD), Alsea School District (ASD) has secured the services of with Dave McKay of HMK Company out of Salem, who has 25+ years of experience in school bond project management. This detailed due-diligence process cannot be rushed in order to ensure that the GMP signed contracts reflect the appropriate obligations for both CB Construction and ASD. This phase of contract development will help protect ASD during the administration of the bond process as well as during the construction phase of the project. Details, scheduling, and construction costs will require skillful management by all involved to ensure that the district receives maximum return for dollars spent while keeping school operations running smoothly.

For any questions about this article, please direct inquires to the Public Information Officer for Alsea School District at sara.cash@alsea.k12.or.us. The District Office is always accessible at shirley.koetz@alsea.k12.or.us.

BREAKFAST LUNCH DINNER



DEB'S CAFÉ

DEB'S DEAL!
Buy One Hamburger at Regular Price, Get the 2nd **HALF PRICE!**

(541) 487-4424

Alsea Valley Voice

Advertise Here!!

CALL PAULINE AT:
541.487.4741




Care for when you are sick.
Care for when you are well.
Care for infants to seniors.

541-487-7116
435 E Alder Street

Accepting new and returning patients

Hours

Monday 9:00-6:30
Tuesday 9:00-6:30
Thursday 7:00-4:00

Continued from Page 12

Cont. – TO-GO EATING BECOMES LESS WASTEFUL

A list of the 9 initial participating restaurants is as follows:

- Ants on a Log
- Murphy's on the River
- New Morning Bakery
- Common Fields
- Old World Deli
- Pacifica Seafood Market
- Squirrel's Tavern
- Wise Cracks Cafe
- The Woodsman

Get set up at one of these restaurants and begin your good eating without any waste and with helping the world, one little bit at a time!

DIAMOND CLEAN

Professional Cleaning Services



- Air Duct Cleaning
- Dryer Vent Cleaning
- Carpet Cleaning
- Residential/Commercial

Your Local Alsea Cleaners

541-754-0360

Todd & D'Ann Ledbetter Owners/Operators

Mainline Pump & Irrigation LLC

INSTALLATION • SALES • SERVICE • REPAIR

All Your Water Needs - Serving You Since 1972

541-929-3870

815 Applegate Street
 Philomath, OR 97370
 Waldport, OR 541-563-8554
 Toll Free: 877-929-3870
www.mainlinepump.com • service@mainlinepump.com



A Full Service Brokerage

Experienced in Rural Land Use Issues

1010 Main Street ~ Philomath, OR

Email: OneonOneRealty@peak.org

Shop Online: OneonOneRealty.Net



Scott Parker
 Principal Broker
 541-609-0126

Bring Back the Blue – additional pictures

by Terry Lunsford, President of the Alsea Wolverines Booster Club

Continued from Page 6



Alsea Forestry Class



Fun on the slip & slide!

Continued from Page 10

Cont. – Progress at the Alsea Emergency Operations Center

At this time, we are looking for new ham radio operators to use the EOC in the event of an emergency such as earthquake or wildfire. While we hope these sorts of events will never happen, it is all about preparedness. We are offering training for interested locals to get their license, and then further training to operate the station's radios. The communications skills include not only voice skills, but also digital radio comms where text messages and e-mail are sent over radio. There are many fun aspects to amateur radio; it is not dedicated only to emergency support. One can simply get on the air and make radio contacts with other hams around the world. There are many ways to do this. Our EOC is equipped for this activity, and we invite local hams, old or new, to take advantage of the facility. The facility has its own club call sign KJ7JHL.

If you have any interest in learning more about the ham radio activities going on in Alsea, we encourage you to get in touch. Please contact me at kf7ggn@gmail.com.



New Home-brew radio tables at the Alsea EOC made from local wood by Jamie Farrington and Craig Anderson



Teaching horses about people and people about horses.
Specializing in developing a safe, respectful partnership
between you and your horse.
Natural footcare, barefoot trimming using the principals
of Dr. Robert Bowker's Physiological Trim.

Cell: 303-596-0160

Email: jimrea@gentlehorses.com

Jim Rea

Survey for Benton County Natural Hazards

The Benton County Natural Hazards Mitigation steering committee is seeking input from Alea’s community regarding the Natural Hazards list below.

Please place a value from 1-11, with 1 being your greatest concern and rank the others, with 11 being your least concern.

Feel free to add comments. All inputs will be presented to the Steering Committee in order to address the future of our rural communities. You can drop this survey off at the Alea Library in the Red Box at the front desk or copy this and e-mail it to me at philplaza@hotmail.com or call me with your results at 541-487-4195. Thank you for helping build Alea’s resilience.

___ Cascadian Subduction Zone Earthquake with a 9.1 or greater event.

___ Crustal Earthquake event

___ Flooding

___ Wildfires

___ Winter Storms

___ Landslides

___ Drought

___ Volcanic event

___ Extreme Heat

___ Pandemic/Epidemic

___ Dam Failure

COMMUNITY FUN IN ALEA

On September 20th, Alea School had it’s open house for students and their families to check out their classrooms and teachers. The Alea Wolverines Booster Club reached out to a few other non-profit entities in Alea to ask if they would like to participate in a community event introducing themselves to our families.

The Booster Club, Alea Fire Dept and Alea Community Effort sponsored a free Ice Cream Social with all the trimmings. Ice cream was donated by Lochmead Dairy, some toppings were donated by Yogurt Extreme. Also present was The Good News Club and Kids Life from the Alea Fellowship Church, and Cynthia B. with the Foreign Exchange Program. While the Alea Boosters served Ice cream with all the trimmings, ACE set up their HAM radio demonstration and emergency preparedness information. The Alea Fire Department brought the fire trucks to showoff to the kids and handed out some fun fire toys.

This was the perfect example of our community coming together where the heart of it is – the school! It was a great community event and worked out so well during the school’s Open House. We thank Alea School for allowing us to host this event. We hope to have it every year with even more participation.

Terry Lunsford – President
AWBC



State FarmTM
 Severn Thomas, Agent
(541) 929-2534
www.onelocalagent.com
 2372 Main Street, Philomath, OR 97370
 24 Hour Good Neighbor Service

HUGHES
EXCAVATION
 Serving our community for 40 years!
 Office: 541-929-3417
 100% Employee-owned company

CONTINUED FROM PAGE 8

Cont. – Winter in the Garden

With December here, The Thyme Garden elves are busy, filling orders for gift boxes stuffed with herbal salves, teas and coloring books that are sent near and far; our goods will also be at the Corvallis Holiday Farmers Market on December 3, so you can pick up some holiday gifts there if you want to check out our offerings, including delicious Christmas cookies that we sell out of right away! If going to the Farmers' Market in December doesn't suit your fancy, you can always browse our brand new, redesigned website www.thymegarden.com and order online from the comfort of your warm, cozy couch!

Once the holidays have passed, the work changes again. We put together our annual seed catalog and mail it out to herb enthusiasts nationwide. Rosemary and lavender cuttings fill up the cutting beds and slow growing plants like hot peppers are started in our seedling beds. Plants that require cold stratification are set outside for their winter vacations, and seed orders start coming in.

Before you know it, spring is coming and the greenhouses are filling up once more with a bounty of herb starts. Hops are being dug for shipping, and we have completed another trip through the winter, heading towards summer again.

Maybe, hopefully, there is a tropical vacation somewhere in there. I feel like I'm going to need it!



SHOP ALSEA for the HOLIDAYS!

*Order custom
gift boxes
now!*

**PLEASE ORDER BY
DECEMBER 15TH**

Lotion, Salve & Bath Balls

Tasty Herbal Cookies

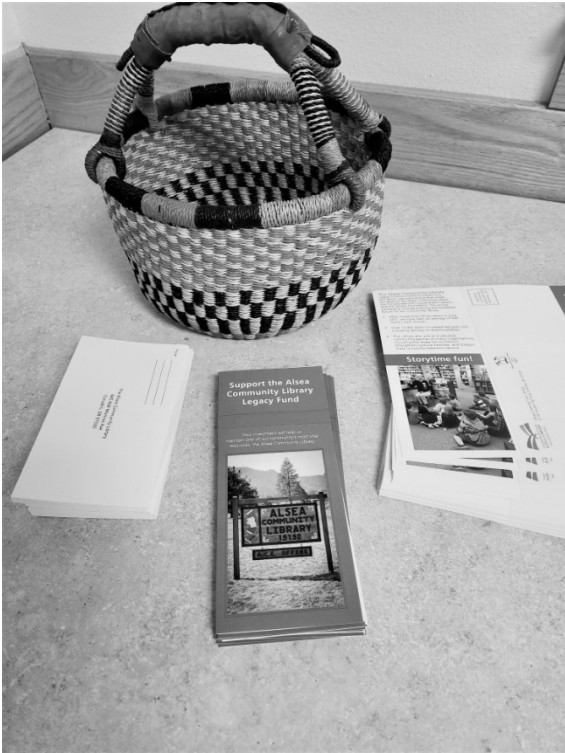
Herbs & Spices

Seed Collections



Call 541-487-8671
or visit
thymegarden.com

More awesome photos from the Legacy Fund Event on November 18, 2022



Alsea Library Legacy Fund
Brochures and donation forms



Sean Gallagher, ASD Superintendent and Ann Clark



Thank you to all who attended!!



Naomi Shadwick, ACE Treasurer and
Eddy Provost, ACE President

Library Lines

by Kathy Koetz

School Storytimes are great! Near the end of last school year I was able to start having classes come to the Library again. This year, so far, I am reading to the 1st, 2nd, 4th and 5th grade classes! Along with me having fun reading to them, the classes that come over get to pick out their own books to take back to school to read.

We have been having so much fun on LEGOS Day! Kids of all ages are building some really interesting projects. See the Alsea Community Library Facebook page for photos. What wonderful imaginations! We are getting our own supply of Legos soon and will be able to schedule a Legos Day each month (I hope)!

The next program on the Library schedule is a Tweens/Teens Hangout on December from 6th 3:30-4:40. There will be crafts, videos games, snacks and FUN!

The New Year will bring us LEGOS Day on January 3rd from 3:30-4:30 also featuring snacks and FUN!

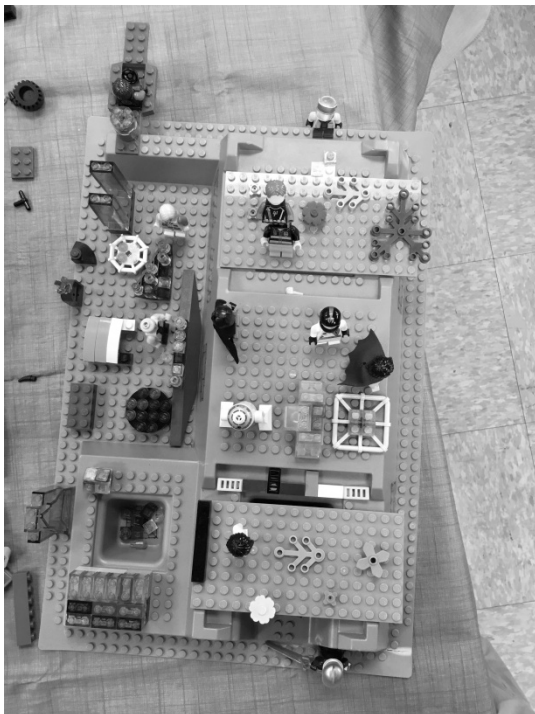
Also coming in January we will have a Maker Day January 17th from 3:30-5 for children of all ages. If you have not been to a Maker Day, it is pretty much as the title suggests...We get to make things and maybe learn something new! In the past we have made flowers that light up, toothbrush robots that write and many more interesting projects. This program is being brought to us by the Mid-Valley STEM-CTE Hub. STEM stands for Science, Technology, Engineering and Math. Sometimes an A is added (STEAM) to include Art.

Dates to remember:

Tuesday December 6 - Teen/Tween Hangout 3:30-4:30

Tuesday January 3rd – 3:30-4:30 Legos!

Tuesday January 17th – Maker Day!



Special thanks to The Thyme Garden for catering the Library Legacy Fund event!




CONSUMERS POWER INC.

YOUR CLEAN & RELIABLE POWER PROVIDER:

- 97% EMISSIONS-FREE POWER, ALL DAY EVERY DAY ·
- LOW COST, 100% RENEWABLE OPTION OFFERED ·
- ENERGY SAVING REBATE PROGRAMS AVAILABLE ·
- EMPOWERED BY OUR CO-OP MEMBERS ·

CPI OFFICES TO SERVE YOU:
 1900 W. OAK STREET, LEBANON - 6990 WEST HILLS ROAD, PHILOMATH
 1-800-872-9036 - WWW.CPI.COOP



**JUSTICE SYSTEM
IMPROVEMENT PROGRAM**
BENTON COUNTY



Treatment and accountability to transform lives, ensure safety, and strengthen community.



Shoes for all ages!
Designed and handcrafted
in Philomath, Oregon.



914 Main Street • (541) 753-5845 • www.softstarshoes.com



Alsea School Looks to the Future

by Sara Cash

Between now and July 1, 2023, Alsea School District (ASD) will complete a series of necessary steps that will transform the school far beyond the scope of the current Alsea Bond Project. The Superintendent Search Committee will launch in January, with the hope of having a new superintendent signatory by March. The new ASD budget for school year 2023/2024 will be in place in April. May will bring school board elections, when 3 seats will be up for election in our district. July 1st will bring the new fiscal year as well as begin the tenure of our new Superintendent. When the 23/24 school year begins in August, ASD will have new energy in leadership integrating with existing strengths in district staff, students, and administration.

ASD will keep communication lines open with the Alsea community as the district moves through these evolving and interrelated processes. Keeping the public informed while seeking community are priorities for the district as we move forward. ASD knows how important the school is to our community, and how much the community cares about where our tiny district is headed in the future.

An opportunity for the Alsea Community to participate in conversation about the what the future of Alsea School will look like is the upcoming community survey portion of the Aligning for Student Success initiative. When the survey is ready, there should be a link to the survey in your email if you are on our school or community email lists. There will also be links to the survey on the school website and Facebook page. Aligning for Student Success is a current guidance protocol from the Oregon Department of Education that rolls six pre-existing initiatives together to streamline grant application processes and leverage funding strategies to enhance student success. For more information on Aligning for Student Success visit Oregon Department of Education : Innovation and Improvement : Student Success Act : State of Oregon . The district will continue to communicate with the public as the administrative team moves through this complicated process to be completed by March or April, which culminates in a four-year plan to guide the development and funding of school programs.

Alsea School District (ASD) has implemented new communications procedures to reinforce public transparency. To see articles about school news, including summaries of board and bond meetings, you can visit the school website at <http://alsea.k12.or.us/news/>. You can also find news articles by following the updated and newly relaunched official Alsea School District 7J Facebook page. Both of these locations have posts about athletics and other school programs in addition to school news.

Acting Superintendent Sean Gallagher is hosting a monthly fireside chat, which is a forum for the community to have dialogue with the Superintendent. Find the calendar here <http://alsea.k12.or.us/media/2022/10/Fireside-chat-calendar.pdf>. These chats are not a forum for complaints, which can be filed at <https://policy.osba.org/alsea/KL/KL%20D2.PDF> or <http://policy.osba.org/alsea/KL/KL%20R%20G3.PDF> or by contacting the Superintendent's office at Shirley.koetz@alsea.k12.or.us .

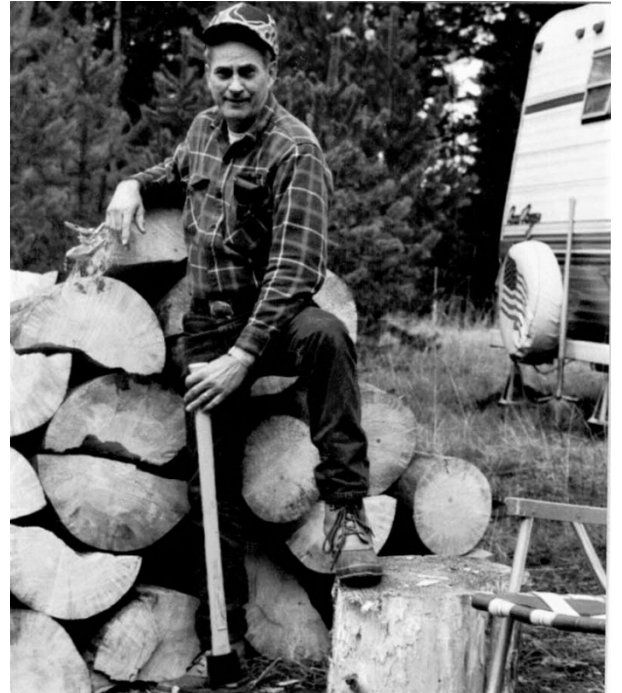
Thanks to all community members who have contacted me to let me know what kinds of communications the community would like to see from Alsea School. Knowing what Alsea folks want to know is so helpful to me as I work towards rebuilding trust in communications between ASD and the community. Please let me know what is working, what is not working, and what you would like to read in the future. Communication is a two-way street, so never hesitate to contact me at sara.cash@alsea.k12.or.us with your concerns and comments.

In Memory of Eric Lundgren

By B.J. France (Granddaughter)

Our beloved Eric Lundgren was one out of five children, born in Lakeview, Oregon on February 10, 1937. He moved with his mother and siblings to Klamath Falls, Oregon at the age of six. His mother was a hard working single parent raising her five children. At a young age, Eric learned the importance of working hard for a family.

Eric graduated from Klamath Falls High School in 1955 and joined the Navy the very next day. After serving four years for the government, he was honorably discharged and worked several jobs including the Forest Service in the summers. Eric realized he never had the chance to serve on the sea in the Navy. He re-enlisted with the condition of "sea-going" and spent two years aboard an aircraft carrier porting to all of the Pacific ports. He enjoyed his Navy time and spoke of it often with pride.



After serving six years in the military, Eric landed a job with the Forest Service in Lakeview, Oregon and Tillamook, Oregon and made his way to the beautiful valley called Alsea, Oregon in 1968. It was then where he met the true love of his life, Wanda Lundgren. He openly accepted her three children and started the life of a loyal family man. After many difficult years, Eric found God on his path of life and devoted himself to the Lord with his wife by his side. Church activities and community events filled his life. In the fall months, he was a part of a "hunting family". He was very dedicated to his mother and she was very much a hunter, herself. Providing food for the family was of importance to Eric. During the other months, you could find him spectating at his kid's sporting event first, then his grandchildren's events, then eventually his great-grandchildren's sporting events. He was always hooting and hollering at every game and was full of life enjoying every one. He never met a stranger and made many acquaintances during these times.

Eric was always eagerly excited for the good time. Whether it be a gently stroll on the beach, square dancing with his beautiful wife, playing cards, attending Southern Gospel concerts, camping and traveling, canoe adventures, hunting, family dinners, Christmas and Thanksgiving gatherings at his home, and numerous family BBQ's in the backyard that he kept so beautiful. Pride of his family and home was Eric.

A perfect 300 bowling game plaque hangs on their wall in their home. Eric loved to bowl and was very good at it. His wife and him were on a league in Corvallis for years. This was just one of many activities in their 53 years together that they enjoyed. He lived a full and humble life. Giving of himself to many. One of his favorite hobbies was helping others by cutting firewood during the days and sharing it with the community. A polite, happy, smiling devoted man to his wife, family and the Lord. The Alsea Community smiles with the memory of Eric Lundgren. He is survived by his wife Wanda Lundgren, his step-children Mark and Brenda Hanson, Dave and Maxine Hanson, Colleen and Mark Yeske and his many grandchildren and great-grandchildren.

John 3:16 "For God so loved the world that he gave his only Son, that whoever believes in him should not perish, but have eternal life." John 11:25-26 "Jesus said to her, "I am the resurrection and the life. Whoever believes in me, though he die, yet shall he live, and everyone who lives and believes in me shall never die."

The Girl I Love

To me she's like a dove on a wing
When I realized this I gave her the golden ring

And as time passed by, I learned to love her more
I knew this when I carried her through that sacred
door

And now years have passed and I've been away
At last I'm coming home to stay

Oh how I pray that we never have to part
Because I know I'll never have the will to start

I've thought so much of her when out to sea
I saw her face in every wave and knew that it
couldn't be

I miss her so during these hours alone
Hoping again to soon be home

I prayed to God on those lonely nights
That she could be with me to hold me tight

And now my days of waiting are coming to an
end
And I know that soon she'll be in my arms again

Oh the joy of being home I cannot express
But in these last few lines I will try my best

I love her more than life itself
For her love is the only one I have ever felt

And now at last we'll always be together
And I'll love her until the twelfth of never

And on that wonderful day when we go up there
Both God and I will know that she'll always be
near.

By

Clarence Lewis Hoyt

My Dad wrote this on a US Navy Carrier missing his
girl - my Mom
Terry Lunsford

**Experience
the difference
of a local
cooperative today**

YOUR LOCAL INTERNET AND PHONE
PROVIDER FOR OVER 72 YEARS!

**Pioneer
CONNECT**

Become a
Member Today

541-929-3135

Pioneer.net



Northwest Roofing LLC

serving the oregon coast and surrounding areas

541-487-ROOF

northwestroofing34@gmail.com

**INVESTING IN OUR
COMMUNITY FOR
MORE THAN 60 YEARS**

Experience the Citizens Bank difference:

- An experienced banking team dedicated to customer service and our community.
- On-site Loan Officers who are empowered to make local credit decisions.

CITIZENS BANK
Good Business. Good Friends.

Philomath Branch
1224 Main Street • 541-929-3228
www.citizensEbank.com

Member
FDIC



REGULAR EVENTS CALENDAR

EVENT/NAME	LOCATION	DAY	TIME	PHONE NUMBER
Alsea Community Effort Board Meeting	Online - Zoom	3 rd Thurs Monthly	6:30pm	541-487-5061
Alsea Fire Dept. Board Meeting	Alsea Fire Hall	Last Tues Monthly	7:00pm	541-487-8701
Alsea Fire Dept. General Meeting		Wednesdays	7:00pm	
Alsea 4-H Small Animal Club		1 st & 3 rd Thurs Monthly	6:00pm	541-207-6552
Alsea Wolverine's Booster Club				503-740-9639
Alsea Food Bank	Jeni's Place	Thursdays	10:00am-6:00pm	541-487-3663
Alsea Garden Club	TBA	2 nd Sat Monthly	6:00pm	541-487-5191
Men's Bible Study	ACF Church	1 st Sat Monthly	8:00am	541-487-4442
Alsea HOPE Grange	Grange Hall	1 st Thurs Monthly	6:00pm	541-486-4215
Line Dance Class		Mondays	6:00pm	541-452-1919
Alsea School Board Meeting	School Library	2 nd Thurs Monthly	7:00pm	541-487-4305
Alsea Valley Gleaners Distribution	1889 Haines Rd	Fridays	2:00pm-7:00pm	503-951-2499
Stich and Rip Quilting Club	Various (please call)	Mondays	10:00am-3:00pm	541-487-8011

ALSEA VALLEY VOICE

Alsea Community Effort
19192 Alsea Highway
Alsea, OR 97324

BULK RATE
U.S. POSTAGE
ASLEA, OR 97324
Permit No. 135

Postal Patron
Alsea, OR 97324

November - December 2022