

November - December 2023



Alsea Valley Voice



Lego Tower During Tuesday Library Lego Day

Alsea Valley Voice

November-December 2023

Volume 25, No. 6

Editor in Chief

Kathy Adair

Layout Specialist

Emily Blake

Production Crew

Naomi Shadwick, Debra Coddington, Kathy Plaza, Phillip Plaza,
Shelley Smith, Michael Hill, Peggy Duncan, Mary Ann Carr,
Cheryl Ross

Advertising Director

Meredith Howell

Printed by

Franklin Printing, Corvallis, Oregon

The Alsea Valley Voice is a publication of the Alsea Community Effort

President Meredith Howell

Treasurer Naomi Shadwick

Secretary Kathy Adair

Alsea Valley Voice (AVV) (USPS Permit No. 135) is published bi-monthly, and free for residence of Alsea Oregon and the surrounding communities by Alsea Community Effort, 19192 Alsea Highway, Alsea, Oregon 97324 - a nonprofit 501(c) Organization serving the social and economic needs of our rural community. Preferred periodical postage paid at Alsea, Oregon 97324. All rights reserved. Reproduction in whole or in art without written permission is prohibited.

Postmaster: Send address changes to ACE /AVV 19192 Alsea Highway, Alsea, Oregon 97324

How to contact the AVV:

Email

Alseavalleyvoice1@gmail.com

Subscription services

Nonresident subscriptions \$25.00 (U.S.) per year; \$25 per year (Foreign).
Prepayment required. Allow 4-8 weeks for first issue.

Address changes

Call us at 541-487- 8696 or email info@alseacommunityeffort.org

Display advertising inquires

Meredith Howell: 541-760-6255 or mhowell@nwumpqua.org

Inside This Issue:

- 3 Letter from the Editor
- 4 Musings from the ACE President
- 5 Alsea Kitchen Club
- 6 Library Lines Alsea
- 7 Obstacles to Health Care
- 8 Alsea Community Action Collaborative Update
- 9 Wanted: Barn Owls
- 10 Ongoing Services & Healthcare Access
- 12 & 13 Alsea Health Clinic Survey
- 14 Alsea School District Updates
- 15 Alsea Wolverine Booster Club's Online Spirit Gear Sale
- 15 Recognizing Les Hockema
- 16 & 17 Community Conversations About Alsea Health Clinic
- 18 Notice of Public Meeting
- 19 ACE Announces Commissioned Art Competition
- 20 & 21 First Look At ASD CTE Building
- 22 & 23 Private Response to Fires



A Full Service Brokerage

Experienced in Rural Land Use Issues

1010 Main Street ~ Philomath, OR

Email: OneonOneRealty@peak.org

Shop Online: OneonOneRealty.Net



Scott Parker
Principal Broker
541-609-0126

Letter From the Editor

By Kathy Adair

This is always such a busy time of year. This has been particularly true right now as we work as a community to regain our Health Clinic. We really need your input as we strive to look for ideas that will work for our community. In this issue, we have a survey that we would appreciate your feedback on. We also have a request for ANONYMOUS testimonials regarding prior care experiences at the Alsea Health Clinic. Your information will be hugely beneficial as the Alsea Community Action Collaborative (ACAC) works to develop some possible options to bring before the community.

Many thanks to all of you who turned out for the Benton County CHC meetings held recently. Your presence was definitely noted by Benton County and helped show them how serious we are about our wonderful community's healthcare needs.

This issue shows how vibrant our community is with articles about our new Alsea Kitchen Club to Barn Owls to the Alsea School District's new CTE building. A big thanks to all who submit articles to make our newspaper newsworthy!

If you would like to submit an article, please let me know. The next deadline for article submission will be **January 15th, 2024**. This will be for the January/February issue. If you are an organization or business, think about what is coming up that you would like the community to know about and let's get something in the AVV.

As always, if you have questions or article submissions, please don't hesitate to message me on Facebook Messenger or email me at our AVV email – AlseaValleyVoice1@gmail.com. Don't forget the "1" on the email. You can also still reach me on my personal email.

BREAKFAST LUNCH DINNER




DEB'S CAFÉ

**DEB'S
DEAL!**
Buy One
Hamburger at
Regular Price,
Get the 2nd
**HALF
PRICE!**

(541) 487-4424

Jay Widmer's

Alsea Anagama Kiln
wood-fired pottery from the Oregon Coast Range



27495 Alsea Highway
541-487-5712
www.jaywidmer.us
Facebook: Jay Widmers Alsea Anagama Kiln

call or email for a viewing

fermentation crock

Musings from the ACE President

I'd like to start by thanking Eddy Provost for his service as the former President of the ACE Board. That was a new role for Eddy, and he held our small group together during a time of transition for all of us. Thank you, my friend. I'm also grateful that Eddy has chosen to remain as a Board member. Currently, he's busy researching the possibility and costs of adding two electric vehicle chargers in the parking lot of our building.

As the new President, I'd like to introduce myself. Although I've lived in the area for more than forty years, I have never lived in Alsea. I've lived in Corvallis, Wren, and I now live outside of Yachats. I am a grant writer for a largish nonprofit called NeighborWorks Umpqua, that builds affordable housing and helps community members in Southern Oregon build financial resilience and wealth (hopefully). I've been working remotely from Yachats for the last thirteen years. I love to read and believe that libraries are an integral part of rural community wellbeing.

I have been a part of ACE as a Board member for the last two years. Our board has been particularly active with 1) revitalizing the Alsea Valley Voice; 2) repairs and maintenance projects for our building; 3) relationship building with service partners in our area; and 4) thinking and planning for how we might better serve the Alsea Valley. Our Board members (Eddy Provost, Naomi Shadwick, Kathy Adair, and Kerry Adair) and I welcome your comments and suggestions to help guide our work.

Meredith Howell, ACE President

Alsea Community Champions - Pledge Form

I (we) will contribute \$_____ towards the Alsea Library Community Center operations, Maintenance Fund, and/or Alsea Valley Voice newsletter. Please make checks payable to Alsea Community Effort, or A.C.E., and mail donations to 19192 Alsea Hwy, Alsea, OR 97234. You can also drop donations off at the library.

Name(s)_____ Phone_____

Address_____

E-Mail_____

- I (we) would like my donation to remain anonymous
- Please contact me(us) to set up automatic deduction payments

New social hobby club: Alsea Kitchen Club!

By Emily Blake

You know those one-on-one conversations where you swap tips on recipes, canning, meal prep, saving on groceries, harvesting your garden, best local food sources... all that?

Let's get together to swap those kitchen tips!

Meetings are the 2nd Sunday of each month.

Each month we'll have fun discussion and a theme.



December's theme is Holiday Food

Sunday, December 10th from 2-4pm

Alsea Library Meeting Room, 19192 Alsea Hwy.

The first hour we'll have loose discussion around things like:

- What's the best thing you've cooked recently?
- Any good local food shopping deals you want to share?
- Tell us about a preserving task you've done recently.
- What would you like to learn more about in the kitchen?

... and much more.

The second hour we'll talk all things food and the holidays. Bring any favorite recipes or cookbooks to share! We'll also discuss our favorite kitchen tools and appliances - just in time to add to your holiday wish lists. ☐

This is a chance to gather, socialize and learn from each other! We'll be meeting in the library meeting room. The main library will be closed, and young kids may get restless, so teens and adults only, please. These meetups are free, but there will be a hat out for donations towards the meeting room fee. Look forward to seeing you there!

Join the Facebook group for all the fun chatter in between meet-ups: facebook.com/groups/alseakitchenclub



Library Lines

by Kathy Koetz

As we all spend more time indoors, maybe it is time to take some of the food that you preserved from the bounty of your garden and find some new ways to prepare dinner.

The Library has a very large selection of cookbooks. From A to Z one might say. We start with [A Table](#) by Rebekah Pepler and go through [Zucchini Love](#) by Cynthia Stevens Graubart. In between there is a huge selection from both well-known authors and new authors. We have cookbooks from TV chefs like Rachel Ray and Julia Child. And regional cookbooks like [Portland, Oregon Chef's Table](#) by Laurie Wolf and [Texas Eats](#) by Bob Walsh. Go back in time and find a recipe for boiled potatoes and peas cooked in a Dutch oven from your covered wagon while you travel [Oregon Trail Cooking](#) by Mary Gunderson. Read [The Vegan Table](#) by Colleen Goudreau and find food to serve that will keep all your family and guests happy.

There was much fun had by all at the Trunk or Treat in the Library parking lot on Halloween. Great job everyone!

And don't forget that we have Lego Day on the first Tuesday of each month! Join us for a great time, have a snack and some company while you build a world from your imagination!

Lego Day:

December 5 3:30-4:30

January 2 3:30-4:30

Halloween Storytime



We Need You!

Obstacles to Healthcare at Alsea Health Clinic

Have you experienced problems accessing health care at the Alsea Health Clinic in the past? We need your stories! Documentation of obstacles to health care access will be helpful in identifying positive changes for health care in Alsea. Information gathered will be compiled by the Alsea Community Action Collaborative (ACAC) for use in the ongoing project to reopen the clinic.

Please briefly share the obstacles you have encountered. Please be detailed but remain ANONYMOUS. We don't want any personal identifying information.

You can submit your written testimony by:

- Mailing to ACAC, 19192 Alsea Highway, Alsea, OR 97324
- Emailing to acac97324@gmail.com
- Dropping off at the Alsea Library during open hours

THANK YOU SO MUCH FOR HLEPING WITH THIS PROJECT as we work to ensure access to healthcare in Alsea!



Teaching horses about people and people about horses.
Specializing in developing a safe, respectful partnership between you and your horse.
Natural footcare, barefoot trimming using the principles of Dr. Robert Bowker's Physiological Trim.

Cell: 303-596-0160

Email: jimrea@gentlehorses.com

Jim Rea

INVESTING IN OUR COMMUNITY FOR MORE THAN 60 YEARS

Experience the Citizens Bank difference:

- An experienced banking team dedicated to customer service and our community.
- On-site Loan Officers who are empowered to make local credit decisions.

CITIZENS BANK
Good Business. Good Friends.

Philomath Branch
1224 Main Street • 541-929-3228
www.citizensEbank.com



Member **FDIC** EQUAL HOUSING LENDER

DIAMOND CLEAN

Professional Cleaning Services



Air Duct Cleaning

Carpet Cleaning

Dryer Vent Cleaning

Residential/Commercial

Your Local Alsea Cleaners

541-754-0360

Todd & D'Ann Ledbetter Owners/Operators

ACAC Update



The Alsea Community Action Collaborative (ACAC) joined up with the Graphic Design class at Alsea Middle School to create a logo, business cards, and letterhead. The students are such talented artists and were very professional in their production and results. They even had to “crunch” to meet a “deadline” so the new logo could make this issue of the AVV. ACAC will continue to partner with the school to fulfill our stated purpose to *create a community where our kids can build bright futures through community based projects that enhance safety, stability, sustainability.*

Instructor David Lynch has a full day of art and design classes grades 5-12 at the school this year. He and his students are busy beautifying the school and community, creating logos and signs for local businesses and nonprofits, and planning a fabulous outdoor art event for Alsea to usher in 2024. This burgeoning aspect of CTE (Career & Technical Education) at Alsea School is a true asset for the students, the school district, and Alsea.

ACAC has been busy creating partnerships with outside organizations including the Benton County Community Development Department, the Benton County Planning Commission, the Benton County Foundation, Oregon Cascades West Council of Governments, the USDA, other Oregon based rural non-profits, and our elected county and state officials. Grants have been submitted to generate funding for ongoing activities, and materials such as a strategic plan are being developed. The primary focus of energy at this time is the workgroup to re-open the Alsea Health Center. Read more about that project in other articles in this issue of the AVV. The infrastructure issues of water, sewer, gas and diesel are also being addressed with the county.

If you would like to get involved and stay informed about ACAC activities, please contact Sara Cash at acac97324@gmail.com or 541-602-7819 or Naomi Shadwick at shadwick@casco.net.



State Farm™

Severn Thomas, Agent
(541) 929-2534

www.onelocalagent.com

2372 Main Street, Philomath, OR 97370

24 Hour Good Neighbor Service

Mainline Pump & Irrigation LLC

INSTALLATION • SALES • SERVICE • REPAIR
All Your Water Needs - Serving You Since 1972

541-929-3870

815 Applegate Street
 Philomath, OR 97370
 Waldport, OR 541-563-8554
 Toll Free: 877-929-3870
www.mainlinepump.com • service@mainlinepump.com



WANTED: BARN OWLS

By Karin Lamberson

I've been conducting Winter Raptor Surveys for the Audubon Society for close to a decade now in Alsea Valley. This is an ongoing citizen science project that started with just a handful of volunteer birders and has expanded to include hundreds of volunteers and routes all over the Pacific Northwest! Once a month during the winter (November-March), each volunteer drives a prescribed route and counts all the hawks, eagles, kestrels, falcons, and owls they can find. All the data is compiled and gives scientists a clear picture of where birds of prey are, how they are using the habitat, and how their population is changing over time. It's an important area of research, and a lot of fun to be a part of!

One of my favorite aspects of this project is how it has allowed me to get to know so many of my neighbors! This is such a wonderful and generous community! My family and I have lived in Alsea for almost 20 years now, and while we're still "newcomers" by valley standards, we definitely feel welcomed and included. I love stopping along my raptor route to chat with friends, greet friendly dogs, and check on the progress of various construction projects. My mom and daughter often come birding with me, so it's a real family affair!

Perhaps you'd like to be added to my list of friendly stops. I'm looking for a barn or two that hosts barn owls to add to our route. It would be a lovely addition to be able to count those amazing birds on our tally sheet! I know many farmers value barn owls for their voracious rodent appetites. We've had a few barn owls that we could usually count on seeing in the past, but they seem to have moved on, so we're looking for more! If you have barn owls, and you wouldn't mind us poking our heads into your barn once a month in the winter, would you be so kind as to drop me a line? You can reach me at karin.lamberson@gmail.com or 541-961-5816.

Also, if you're interested in helping barn owls, here is a website that includes information on how to build a barn owl nesting box! <https://scvas.org/build-a-barn-owl-box>

Thank you so much!

The Franklin Press
COMMERCIAL PRINTING
 office:541-753-0303 • fax:541-758-7658
customerservice@franklinpress.org
 5655 SW Philomath Blvd • Corvallis, OR 97333
 Your source for copies, printing & binding
 We do Load Ticket Books
 and other unique items.
 Bring this ad in
 for a \$5.00 discount
 on any order over \$50.00.

Unwrap the
magic
 of the season with
 with \$50 GIG fiber
 internet

From: **Pioneer
 CONNECT**

Visit pioneer.net/unwrapit to get started!
 541-929-3135

Ongoing Services and Health Care Access Available from CHC during Clinic Closure

By Christine Mosbaugh, CHC Population Health and Engagement Manager and Sara Cash, ACAC Coordinator

The temporary closure of the Alsea Health Clinic that started August 1, 2022 led to local patients arranging for health care access at other sites of the Community Health Centers of Benton and Linn Counties (CHC). Until we have a long-term solution for the future of primary care services in Alsea, here is a guide for how to access these services outside of Alsea.

If you are a registered patient at Alsea Clinic, you can call the Benton Health Center at 541-766-6835 to set up services at 530 NW 27th Street in Corvallis. In addition to this site, there are four other locations for primary care with the CHC. The locations are Lincoln Health Center in South Corvallis, Monroe Health Center, and two locations in Linn County--East Linn Health Center in Lebanon and the Sweet Home Health Center.

The Benton Health Center is open Monday and Wednesday, 8:00am to 7:00pm, and Tuesday, Thursday, Friday 8:00 am to 5:00 pm. Information about all CHC locations is available through Facebook by searching @BentonLinnCHCs. The county website will be updated after the start of the new year and the current site is not maintained.

Primary care for current CHC patients: All current primary care patients of the Alsea Health Center were assigned a provider (PCP), either by calling and requesting a specific provider or through a group transfer to an existing provider at the Benton Health Center. If you are unsure who you were assigned to, contact the CHC or Oscar Monroy at 541-766-2130 for more information.

You are not a new patient when you are seen at a new site; this is a transfer of care. The CHC operates as a system, and you are able to be seen at any clinic you'd like. It can take two to three weeks to get an initial visit scheduled at a new site. Once connected at that location, appointments for specific health care needs can be scheduled with a shorter wait time than the initial visit.

Additionally, as an established patient with an assigned provider, you can always try to get a same day appointment when you need more immediate care. To access same day options at the Benton Health Center, call 541-766-6835 first thing in the morning on days the health center is open. If you set up at another CHC clinic, call that clinic with the same request.

Help accessing services: Oscar Monroy, Health Navigator, is at Alsea Library most Thursdays from 1:00pm - 5:00pm. Although you can just drop by to talk with him, it is a good idea to call the library to see if he will be there. If you need a specific time slot, contact 541-766-2130 to make an appointment to meet with him or another Health Navigator. Health Navigation is available in person at the library on Thursday afternoons or by phone other times during the week. The Alsea Library has cards with contact information for Oscar and the Health Navigation team across the CHC system.

Oscar can help with accessing many other services besides arranging CHC appointments. If would like to become an established patient at any CHC location, bring your insurance card to expedite the registration process. He can also help people complete applications for the Oregon Health Plan (Medicaid), Social Security Disability, Medicare, food programs, and utility assistance. He can also help access programs for installing a ramp or other assistive devices to make a home safer and more accessible for the elderly and/or disabled.

Continued on next page

Continued from previous page

Prescriptions: If you are not signed up for alternative delivery for your CHC based prescriptions to come to your house, Oscar can bring them out to the Alsea Library for you to pick up on Thursday afternoons. Please contact Oscar at 541-766-2130 or in person at the library, so this information is communicated to our pharmacy in Corvallis.

Transportation: Oscar and other Health Navigators can help CHC patients arrange for transportation to and from health care appointments outside Alsea. Another option for transportation is through volunteer faith-based organizations like Volunteer Caregivers of Albany. Yes, they will come out to Alsea and pick people up and bring them home! To schedule a ride, you need to have the time, duration of visit, and address for your appointment.

Behavioral Health: Some behavioral health is offered as part of primary care at CHC-most commonly life skills, medication supports, and resource referrals. To access the Benton County Community Mental Health Program, you can get on a wait list for these outpatient and psychiatric services.

ANYONE experiencing a mental health crisis can call the Benton County Crisis Line at 1-888-232-7192.

For situations that are urgent, Benton County Behavioral Health offers walk-in mental health crisis counseling services for all ages. No appointment is needed. Simply stop at the front desk and ask to see the "Counselor of the Day". These services are available next to the Corvallis-Benton County Library in Corvallis at 557 NW Monroe Avenue. This location is open from Monday to Friday, 8:00am-5:00pm.

If you need support outside of these hours, you can text the national Crisis Text Line at 741741 for 24/7/365, confidential, free crisis counseling. You can also call or text 988 or chat live at 988lifeline.org.

Dental: If you are an established patient of the CHC, you can access the dental clinic at the Benton Health Center in Corvallis. Kids and people who are pregnant are seen at the Corvallis Boys & Girls Club at 1112 NW Circle Boulevard, Corvallis, 97330. To set up dental care, please call 541-766-0123.

Home-Based Care: Established CHC patients who are home bound can access home-based services from their primary care team. Examples of home-based care include a nurse visit, telehealth/phone visit, or support from a Health Navigator. The term home bound includes people who are unable to drive to a visit or leave the home for an extended period of time.

The services listed above are regular and ongoing. The CHC also provides sports physicals, immunization clinics, and dental services in the community on an event basis. Please let us know if there is a need and location - we might be able to support you!

As this temporary closure continues, conversation with the community has been valuable to understand, focus, and support future health opportunities in the Alsea Valley.

ALSEA HEALTH CLINIC COMMUNITY SURVEY

PLEASE COMPLETE THIS FOR YOURSELF OR YOUR HOUSEHOLD. You can fill out one for as many household members as you like if your family members have different health care needs. We would love to hear from everyone in Alsea!

Please complete, tear out, and return this form:

- Drop off at the Alsea Library
- Mail to 19192 Alsea Hwy, Alsea, OR 97324

Please submit as soon as possible, with the deadline to have your responses included in the survey results being December 17th, 2023. This survey is being conducted by the Alsea Community Action Collaborative (ACAC). Information compiled from survey responses will be conveyed to the workgroup that will create a plan for the future of health care in Alsea.

THIS SURVEY IS MEANT TO BE ANONYMOUS to protect your privacy and your health care information. PLEASE DO NOT INCLUDE YOUR PERSONAL OR ANY OTHER IDENTIFYING INFORMATION.

1) I consent to this survey YES _____ NO _____

2) I am completing this survey on behalf of someone else YES _____ NO _____

3) I want Alsea to have a local health clinic YES _____ NO _____

4) I am a currently a patient at the Alsea Clinic/CHC YES _____ NO _____

If yes, please go to # 5

If no, please go to # 7

5) I need transportation assistance, or I walk, to get to appointments YES _____ NO _____

6) What do you like about being an Alsea Clinic patient. Please circle all that apply.

- a. Accessibility and convenience of local healthcare office
- b. Ongoing relationships with office staff
- c. Having a local health care team
- d. Helping my community to thrive
- e. Other _____

7) What would keep you from being a patient at Alsea Clinic if it re-opens. Circle all that apply.

- f. Health insurance requires you to be a patient elsewhere
- g. Lack of health insurance
- h. Need for a consistent primary healthcare provider
- i. Want to stay with current primary healthcare provider
- j. Lack of walk-in options

k. Need for urgent care options

l. Need for specialized services

i. If you are comfortable sharing, please say what kind of specialized services you need:

m. Other _____

8) Would you support having the Alsea Clinic revert to local management? YES _____ NO _____

9) Would you like the clinic property to revert to Alsea? YES _____ NO _____

10) Would you support the Alsea Clinic having a more flexible care model? YES _____ NO _____

11) Would you consider supporting an increase in the Alsea Special Health Services District property tax?

YES _____ NO _____

12) Re-opening the clinic will require commitment and participation from the Alsea community. I could advocate / volunteer / donate funds / cannot participate at this time. Please circle all that apply.

13) Please add any suggestions for what would make the best possible health care clinic for Alsea.

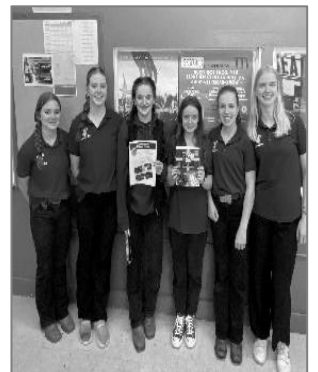
Alsea School District Updates

By Nicole Davis

Things at Alsea School District are in full swing! Our K-6 students have been attending field trips, including Salmon Watching with the Benton Soil & Water Conservation District at Clemens Park.

Alsea Charter School is in the beginning stages of establishing a FFA program. Students are currently looking to do different fundraisers to help raise money to purchase the official FFA jackets and accessories for the members. Any donations to help offset the costs of the jackets are also welcomed. For more information about the FFA program, please contact Mr. Stevens at seth.stevens@alsea.k12.or.us.


Fall Sports have wrapped up. Congratulations to our high school girls volleyball team and our football team for great seasons! Our volleyball team placed 2nd in the district tournament, while our football team ended their season with a record of 5-1. Middle School volleyball and football teams also did well this fall.



There will be no school for students December 25 – January 5 for Winter Break. Have a happy holiday season!!!!

The district is updating our email lists. If you would like to receive updates from the school district regarding school activities and business, please email Nathan Roberts at nathan.roberts@alsea.k12.or.us to get your email and name on our list!

For the most updated information about the happenings at Alsea School District, please be sure to visit our website at www.alsea.k12.or.us or follow us on Facebook.



**The Cottage
at
Bummer Creek**

Mountain Views
Nature Trails & Creek
Disc Golf

18687 Haines Rd
Alsea, Oregon 97324
541 609 6589
airbnb.com/h/country-valley-cottage-alsea



Northwest Roofing LLC
servicing the oregon coast and surrounding areas

541-487-ROOF
northwestroofing34@gmail.com

Alsea Wolverine Booster Club's Online Spirit Gear Sale

This sale has the same logos as the last one: the basketball, flag claw, and the original A. For those who want to order, they encourage everyone to join the Alsea Wolverine Booster Club Facebook group so you can see all upcoming sales and not miss any deadlines.

This sale will start on **11/27** and end at midnight on **12/6**. Once the order closes, delivery of your items will be ready by 12/22, in time for Christmas and basketball! The regular sweatshirt and tee shirt are available in blue and black. The basketball logo is the only one where you can get a specific name and number on the back for an extra fee. This charge is not set by Boosters.

Go Wolverines!

If you have any issues, please contact Terry Lunsford or message their FB group:

<https://www.facebook.com/groups/alseawolverineboosterclub>

Online link: https://stores.inksoft.com/alsea_booster_club/shop/home

(Link won't be open til 11/27)



Recognizing Les Hockema for Community Service

Every year since 2008 residents in the town of Alsea could come out late on the eve of Veteran's Day or during the wee hours of the morning of the day of honoring and see a lone person placing the American flags in their proper places. That dedicated, long-time resident is Les Hockema with an occasionally needed hand from his wife Sandy.

While every year this task is particularly important to Les, this year was special. The flags that had flown every year since 2008 were seriously worn out and he was determined to replace them. He reached out to the community to help fund this task and he was pleasantly surprised at the sizeable response. The community members came together and provided funding for new flags and replacement poles plus established a reserve to be used to replace flags and/or poles as needed for the next several years.

The Alsea Valley Voice, ACE, and other friends and neighbors are taking this time to share recognition of a job well done for the Alsea community by Les and Sandy Hockema in consistently performing this service to honor our veterans and in showing respect for the town and allegiance to our country.

Thank you, Les and Sandy, from the town folks of Alsea.



Community Conversations about Alsea Health Clinic

On November 2nd and 8th, the Community Health Centers of Linn and Benton Counties (CHC) hosted standing room only informational meetings at the Alsea Library about the potential re-opening of the Alsea Health Clinic. Benton County employees from various departments were present to answer questions. There was discussion about the history, current status, operations, and financials of the Alsea Health Clinic and the Community Health Centers of Linn and Benton County (CHC). Alsea residents brought many questions and useful information to the discussions.

The CHC does not have a plan for re-opening the Alsea Health Clinic and is actively seeking input from Alsea about what we want, need, and can support as a community concerning health care. A work group is forming to discuss potential solutions to the closure, with a deadline of February 1, 2024 to determine a path forward. In a separate conversation, Benton County Commissioner Xan Augerot commented that the work group will need to tease out the general financial challenges facing the CHC from the specific financial challenges facing the Alsea branch, determining what model is the best health care fit for the Alsea community, and addressing the elements of emergency response the community needs from a clinic presence. The clinic and the supplies that are supposed to be stored at the clinic building are part of the Alsea Emergency Preparedness Plan.

The Alsea Community Action Collaborative is actively gathering information from Alsea residents about health care needs, so please complete the survey enclosed in this issue of the AVV and posted on Alsea Neighbors and Friends. Also please send your stories of obstacles you have encountered to accessing healthcare at the clinic. ACAC is also having conversations with successful clinics in other isolated communities, like Orchid in Oakridge, and partnering with other rural health organizations and agencies to discuss possible solutions.

Getting the clinic back open will take a lot of work and commitment from the entire community. But as Mimi Stout stated at one of the recent meetings, we know Alsea can support a great health clinic because the Alsea community has done it before. The hard work will result in the retention of vital services that positively impact the quality of life for residents of our isolated community while serving as a pivotal aspect of our community emergency preparedness.

Areas of shared concern by Alsea residents at the meetings included:

- The annual Alsea Special Health Services District payment on our property taxes is intended to help fund the local clinic. This amounts to about \$32,000 total annually and is held in trust until the end of each fiscal year. If the clinic were to revert to Alsea, those funds would be available for the local clinic.
- Possession of the clinic property was deeded to the county after CHC took over operations. Rick Crager, Benton County Chief Financial Officer, said that the clinic could be returned to the Alsea community starting in 2024 if local management of the clinic resumes.
- How can the clinic be re-opened to serve the broader needs of the Alsea community? Concerns included finding a consistent health care provider who is an Alsea resident, the ability for the clinic to accept walk-ins and fee for service patients, and partner services with Alsea School District, which has no on-site nurse at this time.
- The need for the clinic to be open and well stocked in an emergency, since the clinic and supplies there are central to the Alsea Community Emergency Plan.

Continued from previous page

Potential Solutions to closure include:

- Funding for a feasibility study to examine causes of and solutions to budget overages
- Procuring outside grant funding directly to Alsea Clinic, such as Federal Health and Human Services Department Program Funding
- Providing a primary care provider with things like housing in Alsea, paying for schooling, etc.
- Leveraging new supports like telemedicine
- Converting to another healthcare model more compatible with community need, with the possibility of the clinic reverting to local management or an outside manager other than CHC
 - Become a primary access point of care, which would allow for more services and affect revenues
 - Become a fee for service provider, which would allow for more services and affect revenues
 - Become a Rural Health Clinic, which would allow for more services and affect revenues
 - Become a paramedicine provider, which would affect revenues and maximize local involvement

If you are interested in being part of this ongoing community conversation, please contact ACAC at acac97324@gmail.com or 541-602-7819.



CPI
CONSUMERS
POWER INC.

**Powering our Communities
Empowered by Our Members**

6990 West Hills Road, Philomath
800-872-9036 • 541-929-3124 • Rebates: 888-883-9879
www.cpi.coop

Be prepared for an emergency... update your contact information with CPI online or by phone.

ALSEA COMMUNITY ACTION COLLABORATIVE

ACAC is a project under the ACE non-profit

Sara Cash, Coordinator

EMAIL: blossomingdeep@outlook.com

PHONE: 541-602-7819

MAIL: 19192 Alsea Highway
Alsea, OR 97324

WEB: alseacommunityeffort.org



ENGAGING NEIGHBORS AND STAKEHOLDERS IN STRENGTHENING OUR COMMUNITY

MID-VALLEY TIRE

34930 Wren Rd., Philomath, OR 97370

"In Downtwon Wren"



Mike Thomas

PH: 541.929.5756 Cell: 541.740.6164

Website: midvalleytire.net

Email: MBThomas60@yahoo.com

Serving all your

Car, Pickup & Truck tire needs since 1978

Public Notice

Notice of Public Meeting to Address Land Use Issues in Alsea

The Alsea Citizens Advisory Committee (CAC) will meet at the Alsea Library on **Tuesday, December 12 at 1:30pm** to reactivate the committee. The CAC was created in 1970 by Benton County as required by the state of Oregon to give local citizens a way to have input with County Commissioners.

Benton County is going to be reviewing their land use plan, so this is the time to give them input for what our community needs and what we as individuals want to do with our properties. It comes at the perfect time as we see our community losing vital services and unable to grow due to restrictive land use designations.

The CAC consists of 5 voting members and 2 alternates, who must either live or own property in the Alsea area. They are elected by Alsea citizens at a CAC meeting. We will be electing 2 or 3 new members to the committee at this upcoming meeting.

~ COME ~ BRING YOUR IDEAS ~

~ HELP YOUR COMMUNITY THRIVE! ~

ACE Announces Commissioned Art Competition!

The ACE Art Committee is circulating a “Request for Proposal” (RFP) for commissioned original art to be permanently installed inside the Alsea Community Library. This competition is open to established artists residing in Oregon. The selected artist will be awarded \$3500 upon completion of the installation. The deadline for applying for this award is January 31, 2024. The final installation will be celebrated on or around May 31, 2024.

If you would like more information about this “Call for Artists” please come to the library to pick up a printed copy of the RFP document from the librarian during regular library hours. The RFP is also posted on ACE’s website:

www.alseacommunityeffort.org

If you would like a digital copy of the RFP, please contact Kathy Plaza:

ksplaza@icloud.com



Proudly supporting family farms and local businesses since 1970

- WIC and Oregon Trail accepted
- Monthly “Owner Sale Day” discount
- Humanely-raised local meats
- Deli, salad bar, and hot bar
- Fresh, local, organic produce
- Get as little or as much as you need in our extensive bulk section

South Corvallis North Corvallis Open daily
1007 SE 3rd St. 2855 NW Grant Ave. 7am - 10pm
 (541) 753-3115 (541) 452-3115 www.firstalt.coop

Anyone Can Shop at the Co-op and Everyone Saves!



Don't let COVID and flu get you down this winter

The newest COVID-19 vaccine is now available.
 Get your COVID and flu vaccines today!
 Visit vaccines.gov





STARKER FORESTS, INC. *Growing forests, not just trees.*

Wood
Water
Recreation
Wildlife

www.starkerforests.com (541) 929-2477

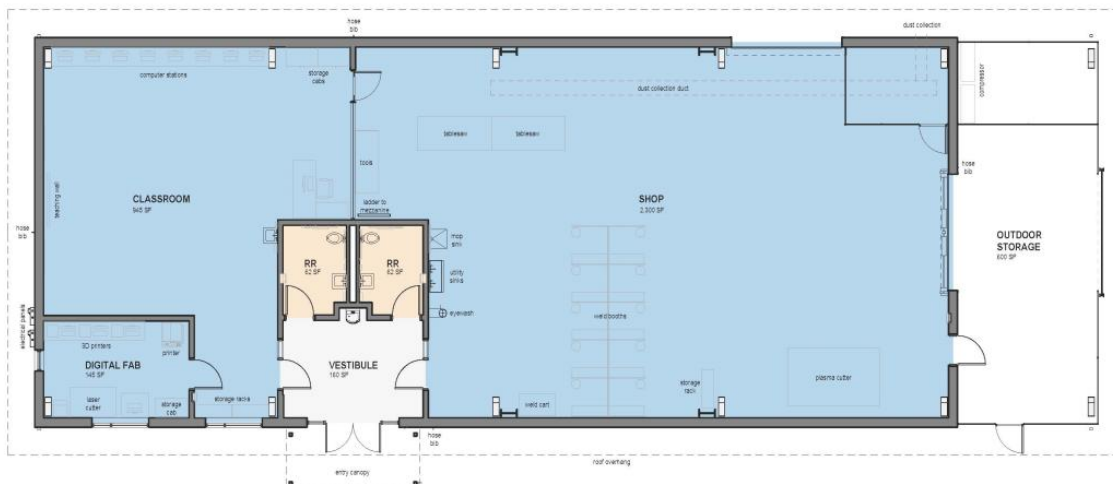
First Look at the New Alsea School CTE Building

By Nancy Giggy

As you may already know, the Alsea School Bond program has so far been focused on some much needed upgrades to the school electrical and HVAC systems. However, as that work has been proceeding, the district team has also been working on re-designing the new CTE (Career & Technical Education) building to meet the school district's needs. Final finishes to the design of this new, 4000 sf building are in the works right now.



As you can see, the new CTE space will include a large shop area, classroom and digital fab, as well as enclosed outdoor storage. With the help of our new CTE instructor, Seth Stevens, the spaces are being designed to accommodate the programs he wants to implement, while remaining flexible for future programs.



Continued from previous page

Last month, we gathered and confirmed the qualifications of three good construction firms to build the CTE. When design is completed this month, these three companies will provide bids to perform the work, which is expected to begin shortly after the new year and will likely continue through next summer.

Completion of the electrical and HVAC projects has been delayed, in part, due to long lead time for one component: the switchgear. For now, those projects are just about as complete as they can be, until that switchgear arrives in late spring. When that arrives, all three projects, including the new CTE building, will be completed. If there are no delays with materials for the CTE building, we expect it to be completed by next fall and our bond program will be complete.

For more project renderings, go to this website: <https://alsea.k12.or.us/2023/11/18/3d-renderings-of-the-new-cte-tech-building/>

Caring for the Health and Wellness of Our Community

Philomath Pharmacy



1640 Main Street
Philomath, OR 97370

541.929.2880

This pharmacy is independently owned and operated under a license from Health Mart Systems, Inc.



Health Navigation

We support your insurance needs and can connect you with local resources!



Alesea Community Library
Every Thursday, 1:00 - 5:00 pm

Oscar Monroy
Health Navigator

Healthy people, strong communities



HUGHES
EXCAVATION

Serving our community for 40 years!

Office: 541-929-3417

100% Employee-owned company

Private Landowners Key to Keeping Ahead of Summer Fires

By Maria Kirkpatrick

When a forester arrives at work around 7 a.m. and the fire truck bay doors are open, they know it's going to be a long day.

A lightning storm in the middle of a dry summer is a recipe for wildfires and that's exactly what happened the early morning of Aug. 25, 2023. Oregon Department of Forestry, West Oregon District reported there were 11 fires in the area caused by lightning strikes. ODF West Oregon District protects 1 million acres and has only 10 fire engines at their disposal. That's why private landowners and those contracted to work those lands are an important part of any firefighting effort.

Starker Forests forester Stephen Coskey, awakened by the lightning, arrived at his office at 4:40 a.m. to assess the situation. By 5:26 a.m. he had sent lightning strike maps to the rest of the Starker Forests' staff. By 5:50 a.m. Coskey had discussed strategy with Jeff Minter, Starker Forests timber manager, also roused early by the flashes, and by 5:55 a.m. left the office to drive and check Starker Forests properties and surrounding areas for lightning strikes. At the third tree farm he visited, Stephen observed a tree struck by lightning.

Meanwhile, at his house at about 4 a.m., Starker Forests CEO Randy Hereford received a text from Lee Miller, president of Miller Timber Services, offering a crew from his office to assist if necessary.

"Lee is pretty quick to get hold of us and put his crews on notice," Hereford said. "He's a good neighbor, community member and always willing to step up."

At 8:43 a.m. Coskey was back at the office to coordinate response with additional foresters.

Then, a call came in from a Weyerhaeuser forester on patrol who spotted smoke on what would become the Madsen's Knob Fire. Mike Gassner, a longtime contract logger for Starker Forests, was in the area and went to work right away to open an access road for responders. Independent contractors are required to have their own fire equipment on hand in case of machine fire or spot fires in the area they work. Gassner was key in getting ahead of the situation. Several Starker Forests personnel arrived and helped cut a line around the fire with hand tools and chainsaws.

Another call came in asking for assistance on the Starr Creek Fire, where smoke could be seen but access was nonexistent. Starker staff split up. Some remained at Madson's Knob to help mop up while others returned to the office to get additional equipment. With more staff and another fire truck, they headed to the Starr Creek Fire, where they joined a variety of other landowners and neighbors to work to control the fire.

Mike Shaw, Oregon Department of Forestry chief of fire protection, said in his report to the ODF board, that the key elements for success to fighting fires this year have been early detection, aggressive initial attack, and aggressive use of aircraft.

Continued on next page

Continued from previous page

Over 24 hours, the dry lightning event in Oregon included 1030 cloud to ground lightning strikes; 452 of those were on ODF protected land.

This was a dry lightning event predicted to take place west of the Cascades, which Shaw said is unusual. Over his 24-year career, he has never seen dry lightning from the California border to Washington west of the Cascades as it typically is accompanied by rain.

The South Mountain Fire in Benton County was on very difficult terrain, Shaw said. However, it was caught at 12 acres, which was amazing with everything else going on. Shaw credited the response of private landowners and a helicopter placed in the area ahead of events.

When it comes to hand crews and machinery, ODF relies heavily on the contractor and landowner community. They call this the complete and coordinated system, which is part of ODF's core mission. It is unique to Oregon as no other state utilizes fire resources this way.

"They continually come to the table and bail us out," Shaw said.

ODF cannot cover every place alone. During the Aug. 24 and Aug. 25 lightning strikes, Shaw said, there were fires that ODF never went to. Landowners were out there and put it out.

"And then we went out to make sure and got it cleaned up and got it into the system so we can track it from a statewide perspective," he said. "That really is how the system works."



REGULAR EVENTS CALENDAR

EVENT/NAME	LOCATION	DAY	TIME	PHONE NUMBER
Alsea Community Effort Board Meeting	Online - Zoom	3 rd Thurs Monthly	6:30pm	541-487-5061
Alsea Fire Dept. Board Meeting	Alsea Fire Hall	Last Tues Monthly	7:00pm	541-487-8701
Alsea Fire Dept. General Meeting		Wednesdays	7:00pm	
Alsea 4-H Small Animal Club		1 st & 3 rd Thurs Monthly	6:00pm	541-207-6552
Alsea Wolverines Booster Club				503-740-9639
Alsea Food Bank	Jeni's Place	Thursdays	10:00am-6:00pm	541-487-3663
Alsea Garden Club	ACF Church	2 nd Sat Monthly	12:00pm	541-760-3856
Men's Bible Study	ACF Church	1 st Sat Monthly	8:00am	541-487-4442
Alsea HOPE Grange	Grange Hall	1 st Thurs Monthly	6:00pm	541-486-4215
Line Dance Class		Mondays	6:00pm	541-452-1919
Alsea School Board Meeting	School Library	2 nd Thurs Monthly	7:00pm	541-487-4305
Alsea Valley Gleaners Distribution	18889 Haines Rd	Fridays	2:00pm-7:00pm	503-951-2499
Stitch and Rip Quilting Club	Various (please call)	Mondays	10:00am-3:00pm	541-487-8011
Alsea Kitchen Club	Alsea Library	2 nd Sun Monthly	2:00-4:00pm	503-255-8055

ALSEA VALLEY VOICE

Alsea Community Effort
19192 Alsea Highway
Alsea, OR 97324

BULK RATE
U.S. POSTAGE
ALSEA, OR 97324
Permit No. 135

Postal Patron
Alsea, OR 97324

November - December 2023